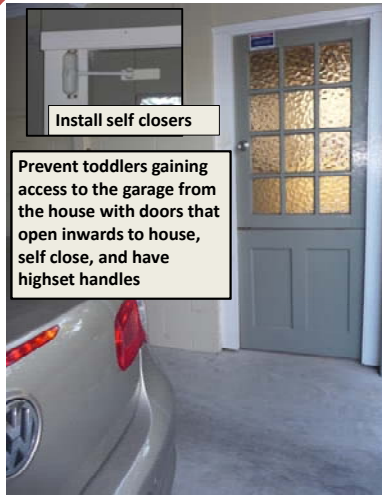


Supervise



Know where your children are before you move vehicles – hold them close or put them in the car with you

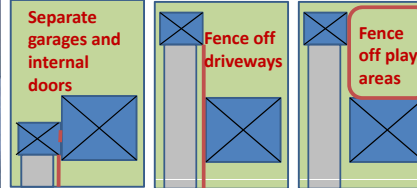


Install self closers

Prevent toddlers gaining access to the garage from the house with doors that open inwards to house, self close, and have highset handles



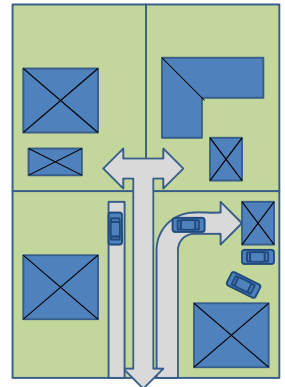
Fence your driveway from play areas



- INJURY RISK DECREASED BY:
- A separate pedestrian pathway to the sidewalk (twofold reduction)
- Fencing off driveway from play area

INJURY RISK INCREASES WHEN:

- Driveway length greater than 12m - (doubles the risk)
- Driveway exiting to a local road increases risk five times. A cul-de-sac doubles the risk
- Additional parking on property is three times the risk)
- Shared driveways increase risk
- Driveway positioned along one of the side boundary (three times the risk)
- Curved driveway (doubles the risk)



Separate



DON'T GO IF YOU DON'T KNOW!

A MULTI-LAYERED APPROACH TO REDUCE RUNOVER RISK



Cameras are designed to prevent damage to vehicles – so think about kids when using a camera or sensors. Kids are quick and may not be seen in time



Understand how little you can see behind your car – like these 62 preschoolers



See



Wave bye bye from a safe place - not the driveway



The size of the car is not a good indicator of rear visibility